

Suite in Es-Dur.

Johann Sebastian Bach
BWV 1010

1. Prélude.

5

10

15

20

25

30

34

39

44

48

51

54

57

59

62

67

71

75

78

81

85

89

2. Allemande.

3

5

7

9

11

13

15

17

19

tr

21

23

25

27

29

31

33

35

37

39

3. Courante.

The musical score for '3. Courante' is written in bass clef with a 3/4 time signature and a key signature of two flats (B-flat and E-flat). The piece consists of 48 measures, divided into ten staves. The notation includes various rhythmic values such as eighth and sixteenth notes, as well as triplets and trills. The first staff (measures 1-3) begins with a quarter note followed by eighth notes. The second staff (measures 4-7) features several triplet markings. The third staff (measures 8-11) continues with eighth and sixteenth note patterns. The fourth staff (measures 12-16) shows a sequence of eighth notes. The fifth staff (measures 17-21) includes more triplet markings. The sixth staff (measures 22-26) features a trill in measure 25. The seventh staff (measures 27-30) also includes trills. The eighth staff (measures 31-36) consists of eighth notes. The ninth staff (measures 37-41) continues with eighth notes. The tenth staff (measures 42-48) features triplet markings and eighth notes.

48

51

55

60

4. Sarabande.

6

11

17

23

28

5. Bourrée I.



31



Measures 31-33: Bass clef, B-flat major key signature. Measure 31 starts with a quarter rest followed by a quarter note G2. Measure 32 contains a continuous eighth-note pattern: G2-A2-B2-C3-D3-E3-F3-G3. Measure 33 continues the eighth-note pattern: G3-A3-B3-C4-D4-E4-F4-G4.

34



Measures 34-35: Bass clef, B-flat major key signature. Measure 34 contains a continuous eighth-note pattern: G2-A2-B2-C3-D3-E3-F3-G3. Measure 35 continues the eighth-note pattern: G3-A3-B3-C4-D4-E4-F4-G4.

36



Measures 36-38: Bass clef, B-flat major key signature. Measure 36 starts with a quarter rest followed by a quarter note G2. Measure 37 contains a continuous eighth-note pattern: G2-A2-B2-C3-D3-E3-F3-G3. Measure 38 continues the eighth-note pattern: G3-A3-B3-C4-D4-E4-F4-G4.

39



Measures 39-41: Bass clef, B-flat major key signature. Measure 39 starts with a quarter rest followed by a quarter note G2. Measure 40 contains a continuous eighth-note pattern: G2-A2-B2-C3-D3-E3-F3-G3. Measure 41 continues the eighth-note pattern: G3-A3-B3-C4-D4-E4-F4-G4.

42



Measures 42-44: Bass clef, B-flat major key signature. Measure 42 starts with a quarter rest followed by a quarter note G2. Measure 43 contains a continuous eighth-note pattern: G2-A2-B2-C3-D3-E3-F3-G3. Measure 44 continues the eighth-note pattern: G3-A3-B3-C4-D4-E4-F4-G4.

45



Measures 45-47: Bass clef, B-flat major key signature. Measure 45 starts with a quarter rest followed by a quarter note G2. Measure 46 contains a continuous eighth-note pattern: G2-A2-B2-C3-D3-E3-F3-G3. Measure 47 continues the eighth-note pattern: G3-A3-B3-C4-D4-E4-F4-G4.

6. Bourrée II.



Measures 1-3: Bass clef, B-flat major key signature. Measure 1 starts with a quarter rest followed by a quarter note G2. Measure 2 contains a continuous eighth-note pattern: G2-A2-B2-C3-D3-E3-F3-G3. Measure 3 continues the eighth-note pattern: G3-A3-B3-C4-D4-E4-F4-G4.

5



Measures 4-6: Bass clef, B-flat major key signature. Measure 4 starts with a quarter rest followed by a quarter note G2. Measure 5 contains a continuous eighth-note pattern: G2-A2-B2-C3-D3-E3-F3-G3. Measure 6 continues the eighth-note pattern: G3-A3-B3-C4-D4-E4-F4-G4.

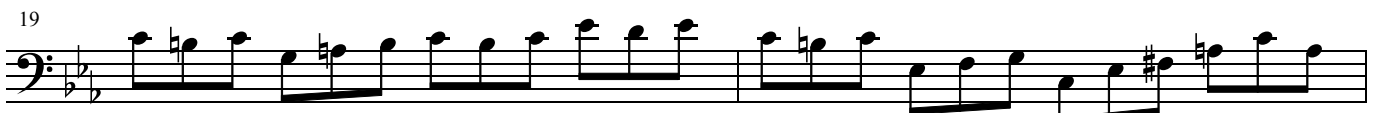
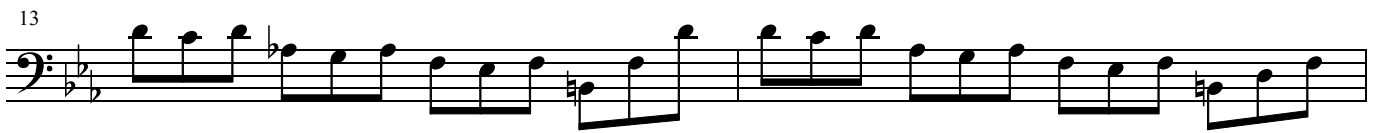
8



Measures 7-9: Bass clef, B-flat major key signature. Measure 7 starts with a quarter rest followed by a quarter note G2. Measure 8 contains a continuous eighth-note pattern: G2-A2-B2-C3-D3-E3-F3-G3. Measure 9 continues the eighth-note pattern: G3-A3-B3-C4-D4-E4-F4-G4.

Bourrée I da Capo.

GIGUE



21

23

25

27

30

32

34

36

38

40