

Suite in c-Moll.

Johann Sebastian Bach
BWV 1011

1. Prélude.

4

8

11

14

17

20

23

25

79

83

87

91

95

99

104

109

114

119

124



129



133



137



141



145



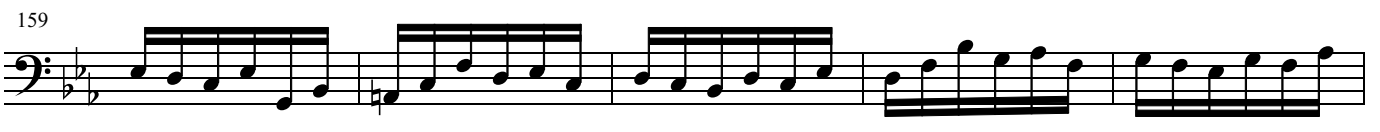
149



154



159



164



168

172

177

183

189

194

200

206

212

218

2. Allemande.

4

7

10

13

16

19

22

25

28

31

34

3. Courante.

3

5

7

9

11

13

15

17

19

22

4. Sarabande.

6

11

16

The Sarabande is written in bass clef, B-flat major, and 3/4 time. It consists of 16 measures. The first measure starts with a half note G2, followed by a quarter note A2, and then a series of eighth notes. Measure 6 contains a repeat sign. Measure 11 features a sixteenth-note triplet. Measure 16 ends with a double bar line and repeat dots.

Gavotte I.

4

8

13

17

21

25

The Gavotte I is written in bass clef, B-flat major, and common time. It consists of 25 measures. Measure 4 includes a trill (tr) over the first note. Measure 8 ends with a double bar line and repeat dots. Measure 13 begins with a repeat sign. Measure 17 features a sixteenth-note triplet. Measure 21 ends with a double bar line and repeat dots. Measure 25 ends with a double bar line and repeat dots.

29

33

GAVOTTE II

2

5

7

10

13

16

18

20

Gavotte I da Capo

GIGUE

8

15

22

30

37

44

51

59

66