

Sonate in F-Dur.

Johann Sebastian Bach
BWV 1022

1. ohne Bezeichnung.

Violino.

5

8

11

14

17

20

24

26

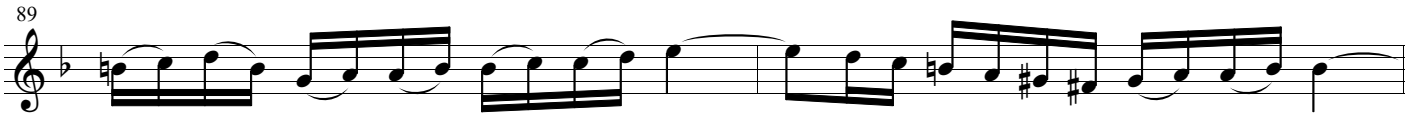
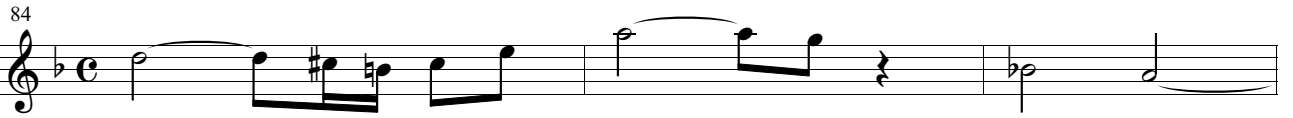
29

31

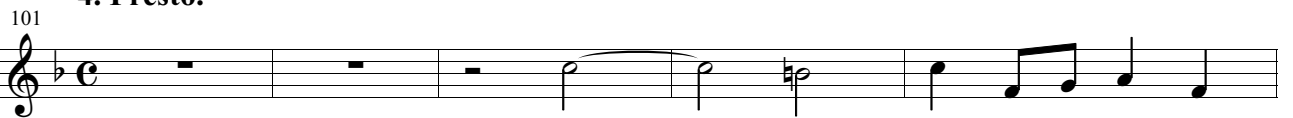
2. Allegro e presto.

The image displays a musical score for a piece in 3/8 time, marked "2. Allegro e presto." The score is written on ten staves, each beginning with a measure number. The key signature is one flat (B-flat). The notation includes various rhythmic patterns, including sixteenth and thirty-second notes, and rests. Several measures contain trills, indicated by the "tr" symbol. A trill is present in measure 1, measure 10, measure 22, and measure 53. A mordent is used in measure 47. The score concludes with two first and second endings in measure 76. The first ending leads to a repeat sign, and the second ending leads to a final cadence.

3. Adagio.



4. Presto.



121

124

128

132

136

140

144

148

152

156

162

166